



SANDFORD, TAS

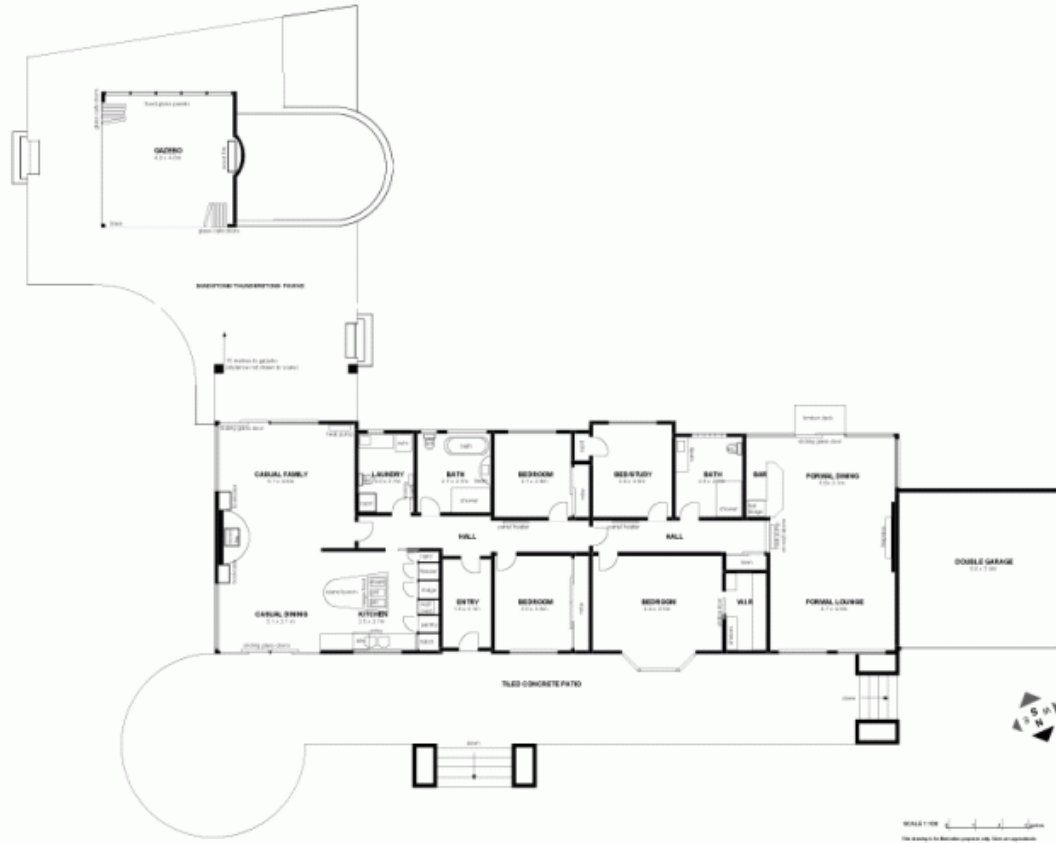


### Paradise Found!

Soak up the ultimate world-class water view. Only 20 minutes (approx.) from Hobart CBD. Relax to the sound of waves lapping the shoreline. There are few homes that enjoy such a private and privileged position, 13 acres approx. at May's Point. Exceptional home with versatile layout, spectacular views from almost every room and wonderful natural light and warmth from the north easterly aspect.

- 360 degree panorama- Stunning beach only 10 minutes walk away
- Flowing formal and casual living spaces
- Sophisticated and well-appointed kitchen
- Top of the range European appliances
- Quality fit-out throughout the home
- Elevated sandstone & tiled terraces for entertaining & relaxing
- Glassed alfresco entertaining gazebo with cafe doors and wood fire
- 6 acres approx. natural bushland

**Kellee Wilson**



SANDFORD, TAS

**BAXTON**